

Armathwaite Hall Country House Hotel and Spa

Jack and Jill Activity Break

They say opposites attract – well if you and your partners idea of the perfect breakaway encompasses very different things, then we have devised a package for you.

The one night break is inclusive of:

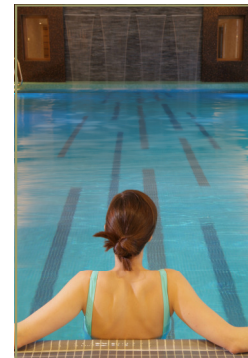
- Dinner in the Lake View Restaurant,
- Overnight accommodation based on sharing a Club double room (upgrades to Superior, Deluxe and Studio Suites available at extra cost)
- Full English breakfast
- Bubble and steam in The Spa

Plus;

For the Jill's – one hour spa treatment for the girls (from selected menu)

For the Jack's - a more sporty option of a one hour Quad Bike Safari for the boys.

- Meet up in the outdoor hot tub for a glass of bubbly later in the day.



Tariff:

Club Room £350.00 per room

Spa Room £360.00 per room

Deluxe Room £420.00 per room

Deluxe Room with lake views £470.00 per room

Studio Suite £510.00 per room

Valid Sunday to Thursday excluding Bank Holidays until 23rd December 2011

Optional extras –

Extend your stay from £155.00 per person per night inclusive of dinner, bed and breakfast

A choice of lunch is available in the Spa lounge, Courtyard Bar and Brasserie Restaurant, Conservatory and Lounge, Lake View Restaurant or a packed lunch can be provide (all at extra cost)

Blue Badge walking guide to take you for a Lakeland walk – you decide if you want to go up a hill or around a lake! £200.00. Advance booking essential

Full afternoon cream tea £18.50 per person



Armathwaite Hall Country House Hotel
& Spa
Bassenthwaite Lake, Keswick,
Cumbria Tel: 017687 76551
www.armathwaite-hall.com
www.luxuryspauk.co.uk